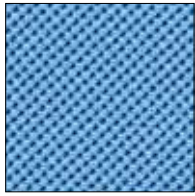


züco
Atlantic . Strickgewebe / Knitted fabric

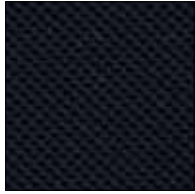
Atlantic (for Conte)



Atlantic SK0
68.20



Atlantic SK0
68.44



Atlantic SK0
68.33



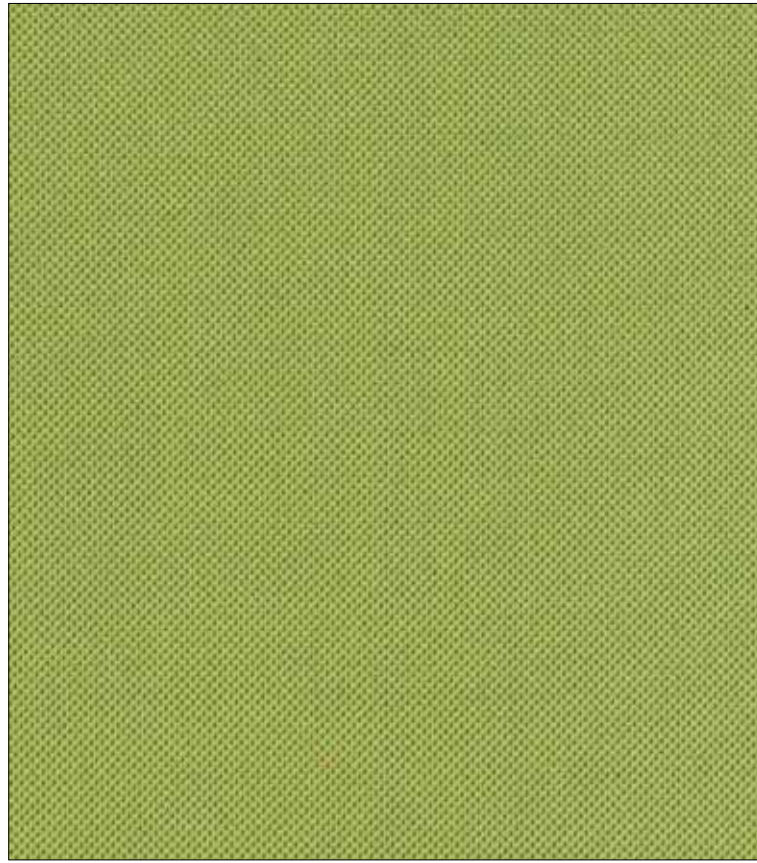
Atlantic SK0
68.42



Atlantic SK0
68.22



Atlantic SK0
68.36

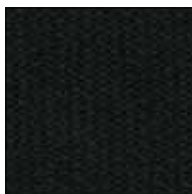


Atlantic SK0
68.11

Strickgewebe / Knitted fabric (for Conte)



AN



SW



DG

Strickgewebe / Knitted fabric (for Riola)



AN



SW



SI



RO



DB

Züco Bürositzmöbel AG
CH-9445 Rebstein
Tel. +41 (0) 71 775 87 87
Fax +41 (0) 71 775 87 97
mail@zueco.com
www.zueco.com

Dauphin Humandesign® Company

zueco.ch / 01.11 / 10'000 d/f/e

Strickgewebe

100 % Polyamid
Lichtechtheit: ISO 105-B02
Scheuerfestigkeit: 50'000 Martindale
EN ISO 1021 1&2

Tissu tricotage

100 % Polyamid
Solidité à la lumière: ISO 105-B02
Resistance à l'abrasion: 50'000 Martindale
EN ISO 1021 1&2

Knitted fabric

100 % Polyamid
Light Fastness: ISO 105-B02
Abrasion Resistance: 50'000 Martindale
EN ISO 1021 1&2

Atlantic

100 % Polyester
Breite: 150 cm, Gewicht: 530 g/lfm
Lichtechtheit: min. 5 (ISO 1-8)
Scheuerfestigkeit: 80'000 Martindale
EN ISO 1021 1&2

Stoffklasse 0

Atlantic

100 % Polyester
Largeur: 150 cm, Poids: 530 g/lfm
Solidité à la lumière: min. 5 (ISO 1-8)
Resistance à l'abrasion: 80'000 Martindale
EN ISO 1021 1&2

Catégorie de tissu 0

Atlantic

100 % Polyester
Width: 150 cm, Weight: 530 g/lfm
Light Fastness: min. 5 (ISO 1-8)
Abrasion Resistance: 80'000 Martindale
EN ISO 1021 1&2

Material class 0